



Municipal



TOWN OF HEMPSTEAD

State of New York

The nation's largest township is converting about 50,000 HPS street lights to LED, and realizing the benefits — making the switch for all lighting an easy one.





NO TURNING BACK: TOWN OF HEMPSTEAD IS “ALL IN” WITH CREE LED LIGHTING

Opportunity

The Town of Hempstead isn't the proverbial “one-flashing-stoplight” variety. In fact, it's the nation's largest township.

Located in Nassau County, just east of New York City, Hempstead Town boasts a population of nearly 800,000. It's larger than several States and major U.S. cities.

It's a town of over 50,000 street lights.

Maintaining those lights takes time and money. Burned-out street lights create safety issues. Then there's the cost: With its existing lighting, the town spent \$4.9 million a year in energy costs and far too much in maintenance. Supervisor Anthony J. Santino and his administration were looking for a more cost-effective and energy efficient solution.

When Gary Aue, the town's Street Lighting Supervisor considered LED Lighting to meet this initiative, he found that the technology and energy savings made economic sense.

And Cree delivered: Those 50,000 lights are being converted to Cree® LED Street luminaires. The next phases of this upgrade will bring LED lighting to municipal buildings, parks and marinas.

“Saving taxpayer dollars with environmentally-friendly technology is a win-win for the town and residents.”

Anthony J. Santino | Town of Hempstead Supervisor

Solution

Cree, a Durham, NC-based worldwide LED manufacturer, has provided Hempstead with lighting solutions that fully meet the needs of the municipality while lowering the budget – one that is expected to bring nearly \$3 million dollars in energy cost savings, while eliminating virtually all maintenance costs.

Aue says he and his colleagues met with several manufacturers, observing demonstrations and discussing warranties. Cree rose to the top, he says, as a company that had been around for a while and was well respected. That piece of mind was a big factor.

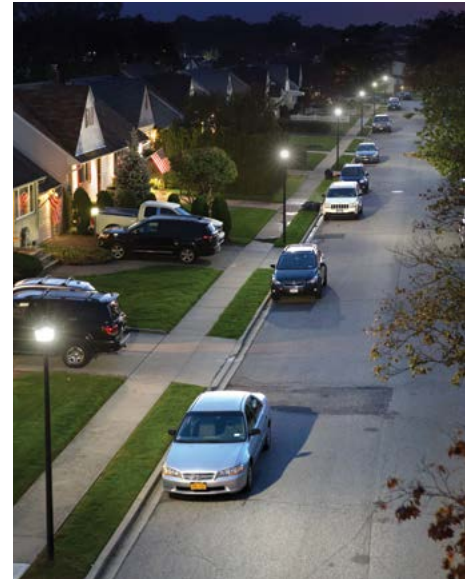
And, equally important, Aue says, Cree was the only company to offer a standard 10-year warranty.

Steve Cotsalas, President of Best LED Group, whom the town contracted to bring the project together, adds that municipal governments recognize that their constituents generally appreciate it when contracts are signed with companies that offer domestically manufactured products.

The Cree® LED Lighting selected, Cotsalas affirms, was “made in the USA, vertically integrated here from chip through to the paint finish.”

The case to select Cree was made to Town Supervisor, Anthony J. Santino, and the Hempstead Town Board; additionally, a trial was conducted along Sunrise Highway. The results indicated energy savings of \$75,000, about 63 percent, for that roadway alone. “When they saw that there was a lot of money to be saved by harnessing energy conservation without sacrificing light quality,” Aue says, “they jumped right on it.”

Supervisor Santino says Cree not only had an excellent track record in other municipalities, but also was the lowest responsible bidder.



2.5 Years
PAYBACK*

\$57 Million
TOTAL LIFETIME SAVINGS

60%
ENERGY SAVINGS

The initiative saves taxpayer dollars, conserves energy and diminishes the town's maintenance effort due to the extensive lifespan of the luminaires.

Aue, Cotsalas and their teams then worked with the application engineering group at Cree to design, assemble and deploy a full package that, in Cotsalas' words, "gave the town the confidence to move forward."

Looking for a way to improve visibility while preserving the historic look of the residential streetscape, the town selected the Cree® DPT Series for Decorative Post-Top luminaires. With 3000K CCT, the DPT™ Decorative Post-Top luminaire delivers for a warm, inviting glow as drivers pass by. The Cree® XSP Series was selected for crisp, clean illumination on major roadways. Cree® OSQ™ flood luminaires with NanoOptic® Precision Delivery Grid™ optics were installed in parking lots where precise optical control is needed.

"Everything has really gone quite smoothly, right from the planning stages through the purchasing and installation – very smoothly," Aue attests.

In fact, he says that while he had expected this to be about an 18-month project, they're on target to finish in just over a year.

"We're not stopping until the entire town is converted to LEDs."

Gary Aue | Street Light Inspection Supervisor,
Town of Hempstead, NY

Benefits

The town was spending almost \$5 million a year for street and parking lot lighting. Now, Cotsalas says, Hempstead has all new luminaires, zero maintenance costs, 60% reduction on their utility bill and is cash flow positive a million dollars annually even with the bank payment." To sum it up...better lighting.

"Saving taxpayer dollars through the use of environmentally-friendly technology is a win-win for the town and residents," says Supervisor Santino. "The new LED luminaires generate significant energy savings that provide unprecedented environmental and fiscal benefits to our town and residents."

Furthermore, Cree® LED lighting creates a heightened sense of security when going out after dark to walk or run or sending the kids out to play.

Business owners appreciate the improved lighting in front of their establishments. And Cree LED street lighting paves the way for a safer driving experience.

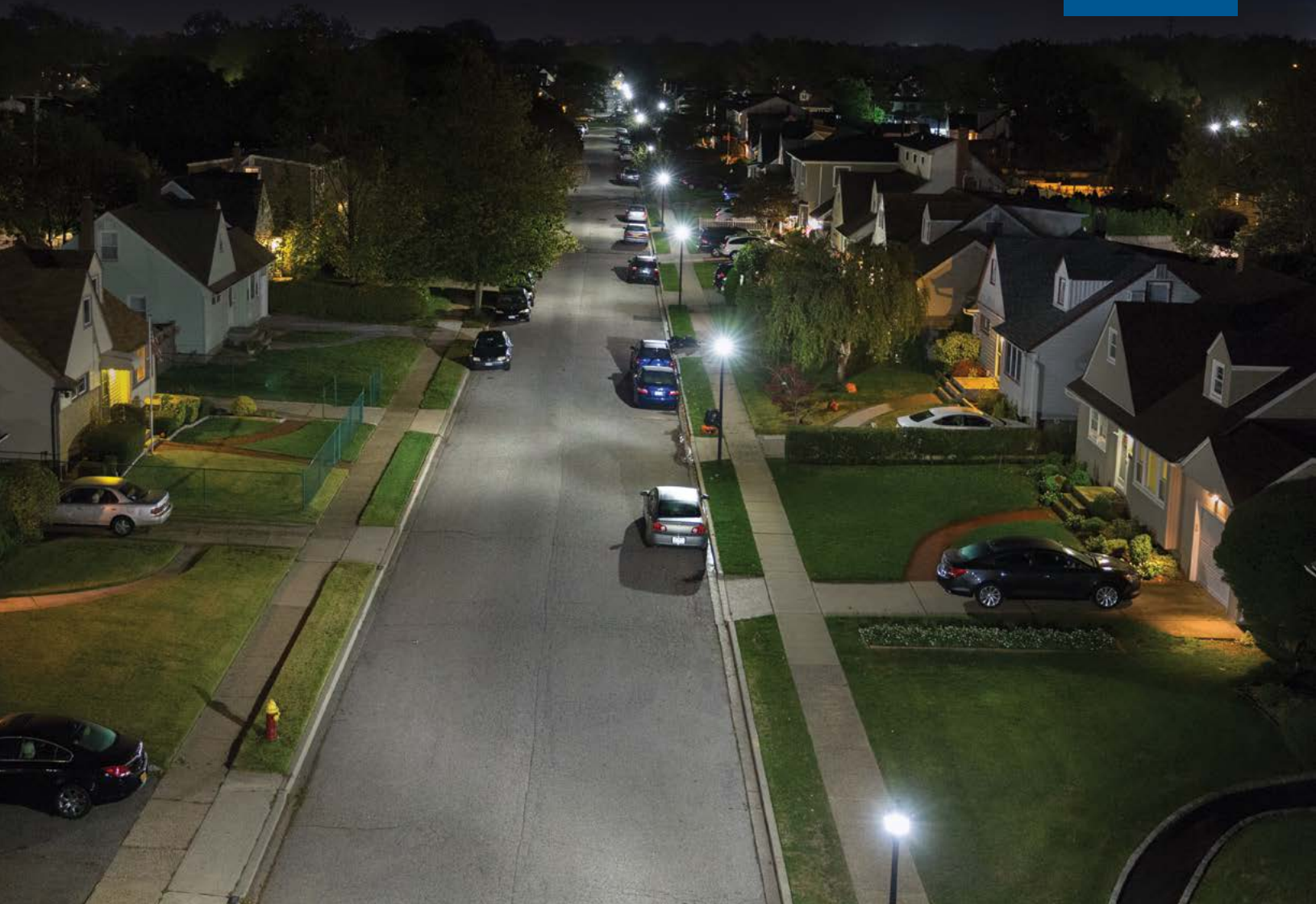
"Due to this success of our street lighting upgrade to LED technology," Supervisor Santino says, "the Town of Hempstead will soon convert an additional 4,000 indoor luminaires, yielding further savings to taxpayers of \$200,000 over ten years.

"We're not stopping until the entire town is converted to LED Lighting," Aue says.

Cotsalas and the Best LED Group are also installing Cree lighting in other Long Island towns. Perhaps one day soon, the whole island will be illuminated with Cree LED Lighting. Cotsalas doesn't see why not: "Superior lighting, 10 year standard warranty, zero maintenance, reduced carbon footprint & 60% energy savings make this a very compelling project for all municipalities."



Municipal



Cree® LED Lighting Used

- DPT Series Decorative Post-Top
- XSP Series Street & Roadway
- OSQ Series Flood

Participants

End User: Town of Hempstead, State of New York

Distributor: Best LED Group

Visit lighting.cree.com or contact a Cree lighting representative to learn more.

info@cree.com | 800.236.6800

© 2016 Cree, Inc. All rights reserved. For informational purposes only. Not a warranty or specification. See lighting.cree.com/warranty for warranty and specifications. Cree® and NanoOptic® are registered trademarks, and the Cree logo, DPT™, OSQ™ and Precision Delivery Grid™ are trademarks of Cree, Inc.
CAT/CCS-C116

Date of release: November 2016

